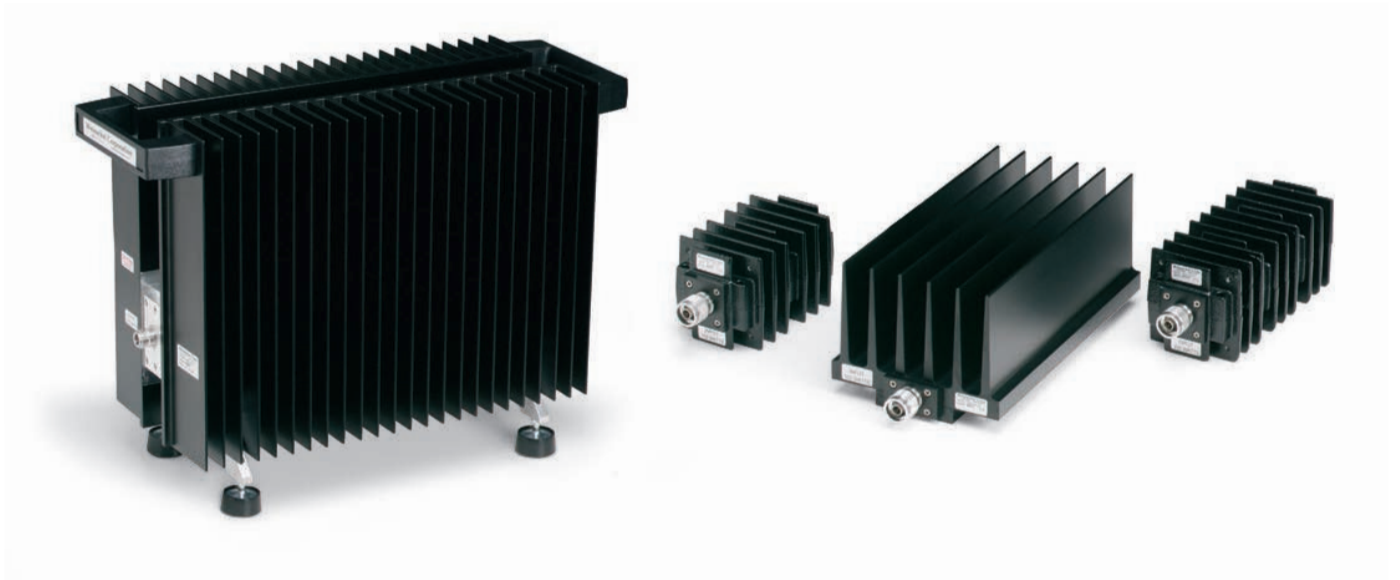


## LA Series Load Attenuators.



### Monitor Signals at Acceptable Levels.

This series of high-power, fixed coaxial attenuators is recommended for use with RF power amplifiers that operate in the same frequency and power range as the attenuators. The attenuated output provides a means of monitoring the signal at an acceptable level by sensitive measuring instruments like a spectrum analyzer, power meter or oscilloscope, and permits use of a detector for RF leveling.

### LA Load Attenuators

	LA100	LA150	LA500	LA1000
Frequency Range	DC-18 GHz	DC-6 GHz	DC-5 GHz	DC-3 GHz
Power (max. watts)	100 W continuous to 55°C*	150 W continuous to 25°C*	500 W continuous to 25°C*	1000 W continuous to 25°C*
Attenuation	40 dB ± 1.0 dB (DC-5 GHz)	40 dB ± 2.0 dB (DC-5 GHz)	40 dB ± 1 dB (DC-2.5 GHz) 40 dB +0.5 dB, -3 dB (2.5-5 GHz)	40 dB ± 0.75 dB (DC-1.5 GHz) +1.5, -0.5 dB (1.5-3 GHz)
Input VSWR (max.)	1.25:1 (DC-8 GHz)	1.1:1 (DC-2 GHz) 1.2:1 (2-6 GHz)	1.15:1 (DC-2.5 GHz) 1.35:1 (2.5-5 GHz)	1.15:1 (DC-1.5 GHz) 1.25:1 (1.5-3 GHz)
Output VSWR (max.)	1.35:1 (8-12.4 GHz) 1.45:1 (12.4-18 GHz)	1.20:1 (2-5 GHz)	1.15:1 (DC-2.5 GHz) 1.25:1 (2.5-5 GHz)	1.15:1 (DC-1.5 GHz) 1.25:1 (1.5-3 GHz)
Connectors Input	N (M)	N (M)	N (M)	N (F)
Output	N (F)	N (F)	N (F)	N (F)
Ambient Temperature Range	-55°C to 125°C	-55°C to 125°C	-55°C to 125°C	-55°C to 125°C
Operating Position	Horizontal Only	Horizontal Only	Horizontal Only	Horizontal Only
Weight (max.)	320 g 11 oz	1.13 kg 2.5 lb	3.63 kg 8 lb	13.15 kg 29 lb
Size (approximate) W x H x D	21.8 x 4.2 x 4.2 cm (8.6 x 1.62 x 1.62 in.)	80 x 80 x 137.1 mm (3.15 x 3.15 x 5.4 in.)	138.7 x 109.5 x 259.6 mm (5.46 x 4.31 x 10.22 in.)	178 x 332 x 451 mm (7.00 x 13.1 x 17.76 in.)

\* See specification sheet for derating curves.