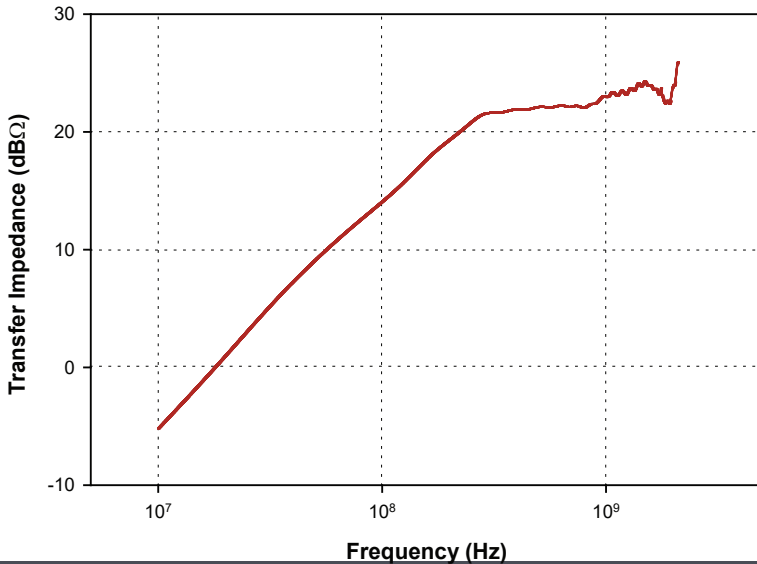
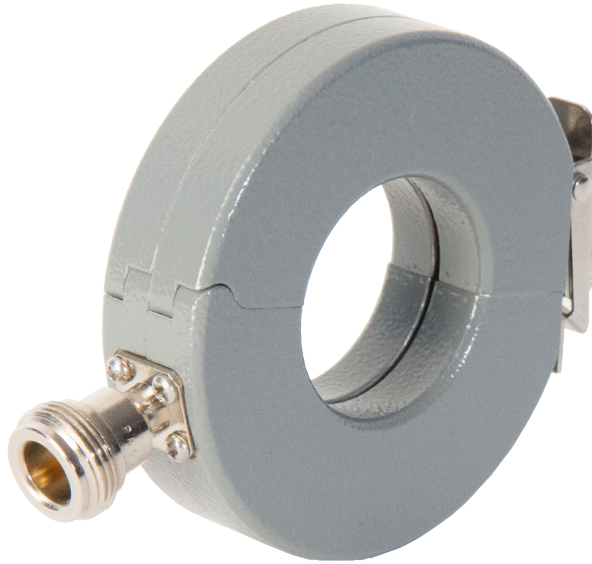


F - 2000-32mm-1

CURRENT PROBE

The F-2000-32mm-1 is for laboratory and field testing. This probe has a small outer diameter, approximately 71 mm, with an internal diameter of 32 mm. It can operate up to 350 amperes of DC – 400 Hz, 3 amperes of CW and 100 amperes of peak pulse current.



Specifications

Frequency:	10 MHz – 2.1 GHz
Internal diameter:	32 mm
External diameter:	71 mm
Height:	19 mm
Z _t Ω ¹ :	18
dBΩ ² :	25
Connector ³ :	Type N
DC to 400 MHz:	350 amperes
RF(CW):	3 amperes
Peak Pulse Current ² :	100 amperes

1: Probe calibrated with 50 Ω + j0Ω Load Impedance.
2: Depends upon the pulse width and pulse rep. rate.
3: SMA connector available upon request.



Fischer Custom Communications, Inc.

19220 Normandie Ave., Unit B Torrance, CA 90502
Phone: 310-303-3300

Email: sales@fischercc.com

© Fischer Custom Communications, Inc.