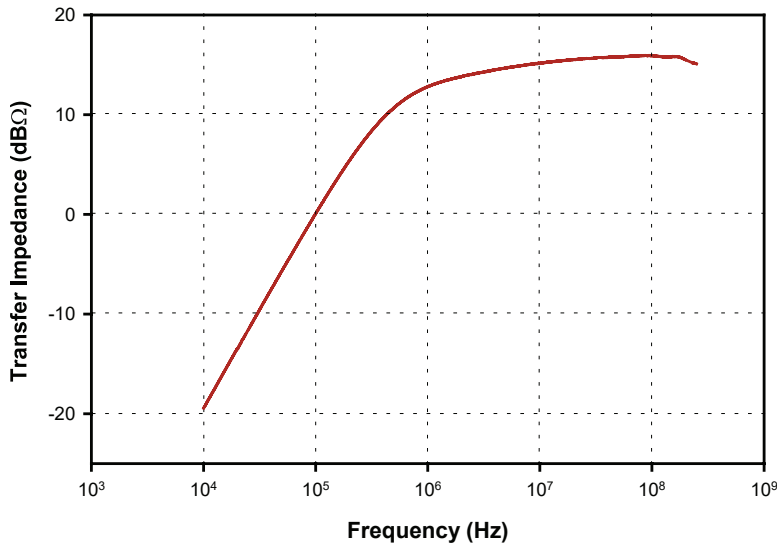
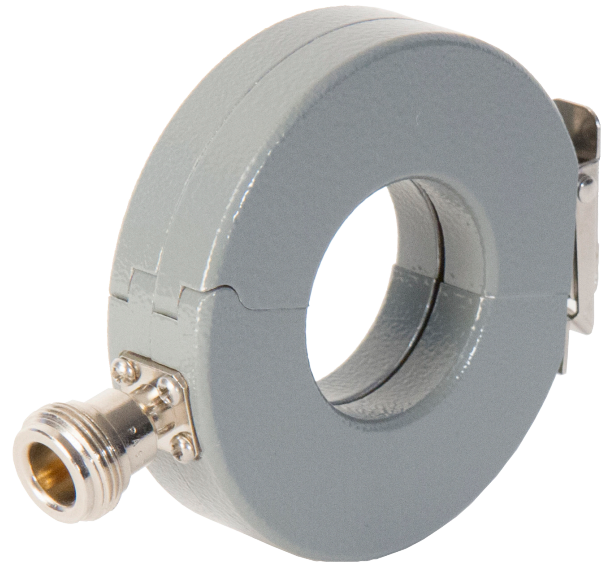


## CURRENT PROBE

The F-33-1 is for laboratory and field testing. This probe has a small outer diameter, approximately 71 mm with an internal diameter of 32 mm. The F-33-1 is usable from 10 kHz to 250 MHz. The typical transfer impedance is shown below.



### Specifications

Frequency:	10 kHz – 250 MHz
Internal diameter:	32 mm
External diameter:	71 mm
Height:	19 mm
Nominal $Z_t \Omega^1$ :	6.3
Nominal $dB\Omega^2$ :	16
Connector <sup>3</sup> :	Type-N
DC to 400 Hz:	100 amperes
RF(CW):	2 amperes
Peak Pulse Current <sup>2</sup> :	50 amperes

1: Probe calibrated with 50  $\Omega + j0\Omega$  Load Impedance.  
2: Depends upon the pulse width and pulse rep. rate.  
3. SMA connector available upon request.



Fischer Custom Communications, Inc.

19220 Normandie Ave., Unit B Torrance, CA 90502  
Phone: 310-303-3300

Email: sales@fischercc.com

© Fischer Custom Communications, Inc.