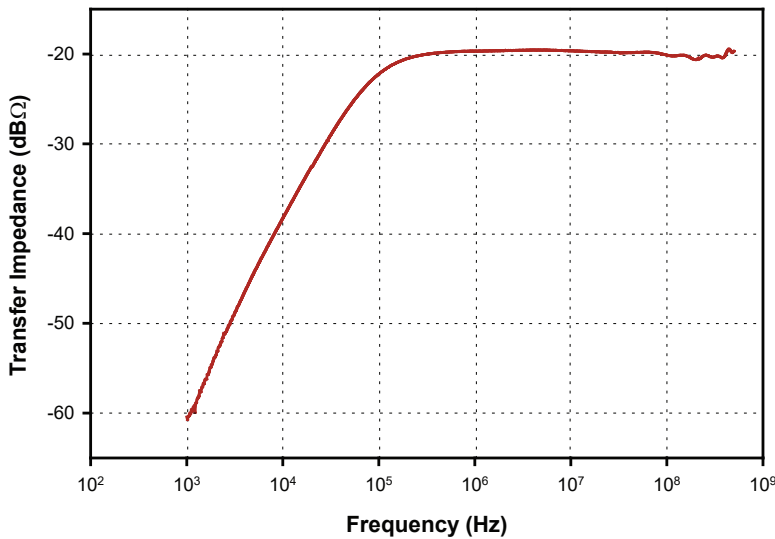
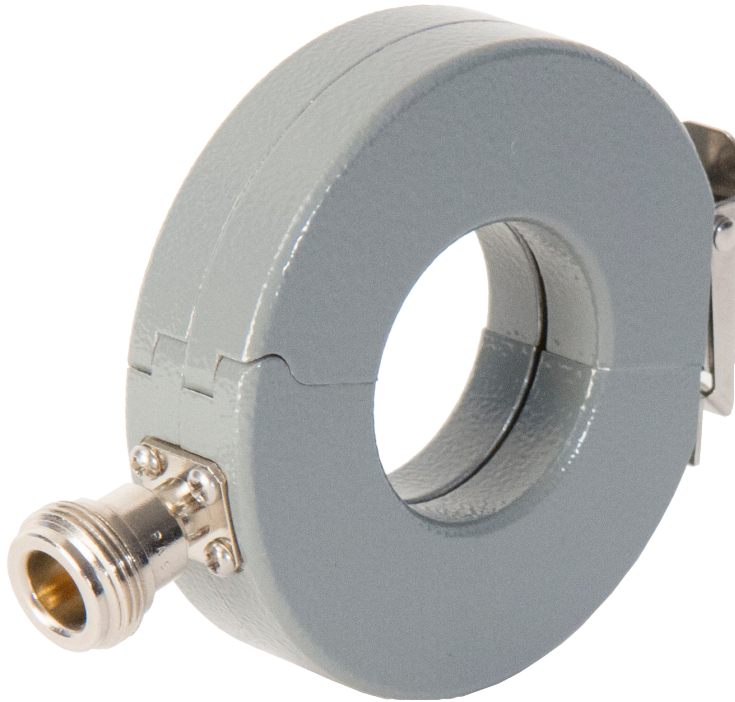


CURRENT PROBE

The F-55A is for laboratory and field testing. It is capable of measuring pulse transients with risetimes of 800 picoseconds and a pulse width of 3 microseconds. This probe has a small outer diameter, approximately 71 mm, with an internal diameter of 32 mm. Its transfer impedance is 0.1 Ω from 100 kHz to 500 MHz. It can operate up to 350 amperes of DC – 400 Hz, 10 amperes of CW and 100 amperes of peak pulse.



Specifications

Frequency:	1 kHz – 500 MHz
Internal diameter:	32 mm
External diameter:	71 mm
Height:	19 mm
Zt Ω ¹ :	0.1
dB Ω ¹ :	-20
Connector:	Type-N
DC to 400 Hz:	350 amperes
RF(CW):	10 amperes
Peak Pulse Current ² :	100 amperes

1: Probe calibrated with 50 Ω + j0 Ω Load Impedance.
 2: Depends upon the pulse width and pulse rep. rate.



Fischer Custom Communications, Inc.

19220 Normandie Ave., Unit B Torrance, CA 90502
 Phone: 310-303-3300

Email: sales@fischercc.com

© Fischer Custom Communications, Inc.